



River Cruise 135

The new standard in river cruising
Fast Delivery





River Cruise 135



The new standard in river cruising

Fast Delivery

3 decks



Already under construction for rapid delivery



Concordia Damen has applied its extensive experience in the inland shipping sectors to the design and construction of a new river cruise vessel.

The vessel offers unrivalled comfort (and safety!) for all those on board. Additionally, it features a sustainable focus that positions the vessel for the future, ensuring its ability to comply with the most stringent of environmental regulations.



Standardisation

The path to fast delivery

As part of the Damen Shipyards Group, Concordia Damen builds its vessels according to the principle of standardised shipbuilding.

The yard applies **proven processes, techniques and technology** to building its vessels in series for stock.

This results in the fast delivery of a reliable product and ensures the continual evolution of the Concordia Damen portfolio.

This river cruise vessel is an example of this philosophy in action. The result is that the vessel can be tailored to a client's requirements and **readied for delivery within just nine months** following contract. As such, at the time of writing, the vessel could be delivered **in time for the 2025 river cruising season** – with ample time remaining to market the availability of a forthcoming vessel.

A home away from home

The interior of your vessel is of the utmost importance to the cruising experience of your guests.

Concordia Damen enjoys close relationships with leading Dutch marine interior specialists and boutique designers. In short, we will tailor the boat to your required tastes and level of luxury.



Comfort, ease and luxury

Only the highest quality materials and components are used, while a quiet and relaxing environment results from high levels of insulation between guest cabins.

Guests are able to freshen up with shower heads featuring air additions, offering the experience of a rain shower with an absolute minimum of wastewater.

Beyond the cabins, passengers enjoy access to a large, open front deck space with a range of outdoor seating options.

Inside, lounge and restaurant areas feature air conditioning and heating systems drawing on heat recovered from the vessel itself. This **ecological approach** not only ensures passenger comfort, but it also guarantees a safe environment, preventing the spread of airborne disease.

If desired, there is the option to include an additional lounge area to the aft of the vessel.





Crew Comfort

Concordia Damen firmly believes that a good cruise vessel should not only provide a pleasant experience for guests; it must also be a **safe, comfortable, and enjoyable working environment.**

To that end, the design incorporates a large number of individual crew cabins, providing an opportunity for personnel to relax in comfort and privacy.

In addition, there is a separate, **spacious aft deck for crew members** to unwind, incl. a mess room adjacent to the open deck.

The Cruise Director has his/her own cabin, complete with additional office space and separate from guest areas.

CONCORDIA DAMEN RIVER CRUISE 135



A balanced interior

Many clients today expect companies to act responsibly. For a large part that translates into a need for sustainable operations. Even in a luxury environment, cruise passengers want to see cruise and tour operators to make an effort in avoiding waste and improving carbon footprint.

As Concordia Damen, we want to take part in creating a more sustainable maritime industry. That is why the interior of this River Cruiser has been designed by Mdesigns.

Marloes Boele, Chief Designer, is convinced that the wish for a 'clean future' can even bring about "a human renaissance. We have the **opportunity to rediscover and reinvent everything**. Although the shift will take time, I think we can already see how a return to a more natural equilibrium will result in a sensation of freedom and lightness. Our interiors evoke that feeling with cruise guests."

CONCORDIA DAMEN RIVER CRUISE 135



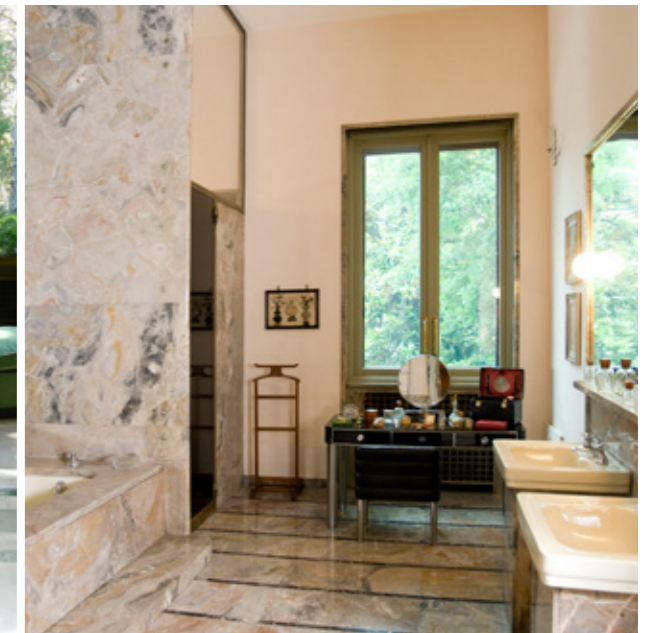
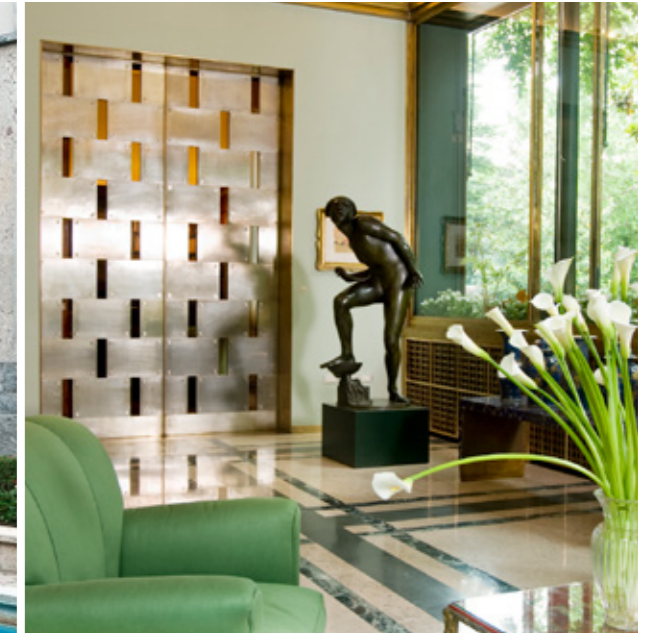


Inspiration Revolutionary Milanese fusion

Owners can, of course, also bring in their own preferred designer. When building this vessel, however, the match with Mdesigns was a logical one, as we aimed for a marriage between sustainability and luxury.

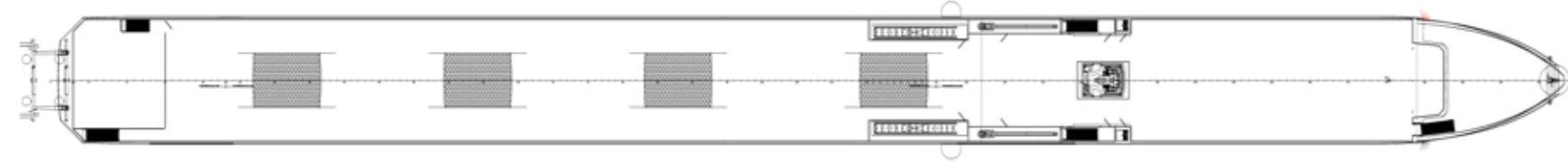
In Marloes' words: "Italians are renowned for having an individual taste that is refined, classy, and leaves nothing to chance. Italian residential design is remarkable in every way. Take, for example, the 1935-built renowned vacation home 'Villa Necchi Campiglio'. A classic. It exemplifies Milanese luxury in a fusion of neo-renaissance bourgeoisie and then-futuristic technology. Those elements, combined with a modern, hybrid design style with a touch of retro, form our inspiration for the ship's identity and the interior design."

According to Marloes, "**circular design and constructions are no longer simply 'a technical innovation', but a way to give back to people and nature.** 'Green' invades our home, architecture, our public spaces and our travel. That is why we reuse and refurbish materials, prefer natural over chemical and traditional over mass production."



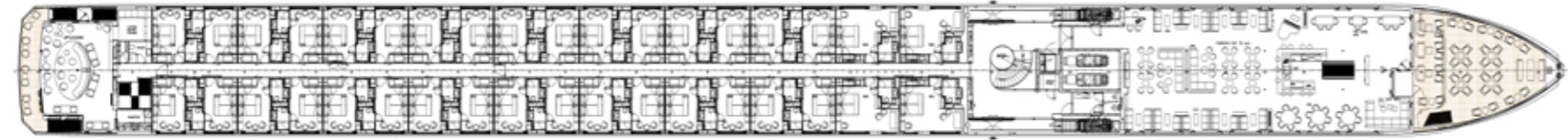
Concordia Damen River Cruise 135

Sundeck



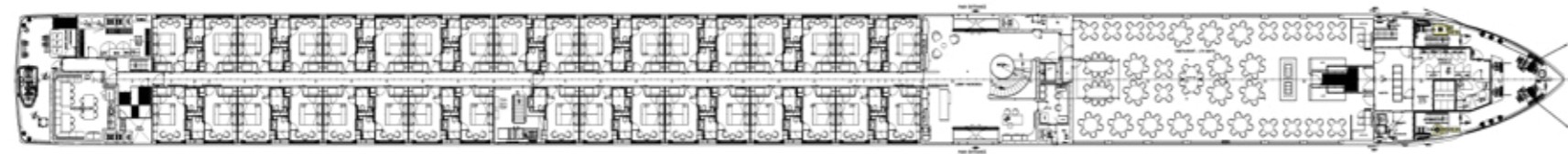
Upperdeck

64 pax in
20 double pax cabins
and 12 suites



Maindeck

70 pax in
35 double pax cabins

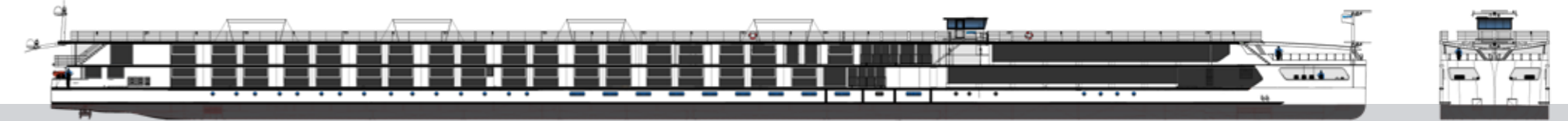
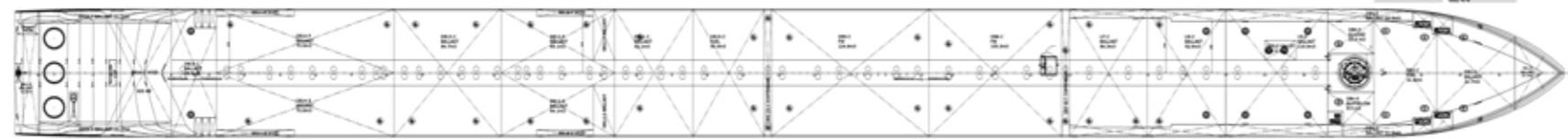


Lowerdeck

36 pax in
18 double pax cabins



Tanktop



Dimensions

Length o.a. 134.90 m
Breadth o.a. 11.45 m
Draught approx. 1.35 m
Air draught 6.10 m

Performance

Speed max. 21 km/h
Service speed economic 17 km/h

Accommodation

Passengers 176
Suites 12
Cabins 76
Crew 44

Public spaces

Crow's nest, observation and main lounge,
spa/gym, cinema, in- and outside dining,
bar/buffet/coffee house, expedition lounge

*Current arrangement for illustration only.
This can be changed at customer's request.*





Sustainability as priority



The vessel has been designed with sustainability as a priority. It boasts a Green Award Gold Standard – the highest environmental rating currently achievable.

To ensure this capability, the design features numerous concessions to sustainability and efficiency – while making no compromises on performance.

CONCORDIA DAMEN RIVER CRUISE 135

Low emission electrical and hybrid credentials

The vessel's hybrid propulsion guarantees a reduction in both fuel consumption and emissions. With its three thrusters, the cruise vessel is able to **operate in full-electric mode** in normal conditions. Its four Stage V generators provide additional efficiency.

Overall, power has been reduced from 2650kW to 2000kW with no sacrifice in performance. A battery pack provides peak shaving and load balancing capabilities. With the battery pack, the vessel requires only one cable for a shore connection and can remain fully operational while in port, while producing minimal emissions.

Climate care

High insulation levels onboard sees reduced requirement for cooling during the summer and less heat loss during the winter. As a result, the vessel is able to sail efficiently year-round with **minimal demand on the hotel load**.

In the kitchen areas, **ventilation and extraction is laser controlled** for ease of use and improved climate regulation. Warm water is generated with residual heat from the vessel's generators. Additionally, air is taken from the vessel's fresh air systems and passed through a heat exchanger, saving up to 85% on energy consumption in the lounge and restaurant areas.

Environmentally conscious materials

The sustainability focus can be found throughout the vessel, not only in its performance, but also in the hotel areas. Natural, low impact materials are used wherever possible in the interior areas.

Close attention is paid to ensuring the **traceability of woods and other materials** used in outfitting. Our intention is to meet – and exceed – not only our sustainability ambitions, but also yours and those of your guests.



Green Award 2023 Gold Standard

Insulation allows for year-round sailing without being affected by the (winter) season



High insulation of outer skin and decks results in lower energy consumption



Premium quality glass ensures better cooling in summer and less heat loss in winter



Large separated aft deck for the crew with mess room adjacent to the open deck



High level of cabin-to-cabin noise insulation



Full-electric ship with 3 thrusters; can switch to 2 thrusters without loss of speed



Only one shore power cable required to keep the ship fully operational in port



Solar panels installed in the railings



Laser controlled kitchen ventilation and extraction for better climate regulation and energy reduction



Large, open front deck with seating for guests



Battery storage for peak shaving and load balancing



Generators with 4 identical Stage V engines. If necessary, the ship can switch to 3 engines without loss of speed and hotel operations

Installed power reduced from 2650 kW to 2000 kW, without losing performance

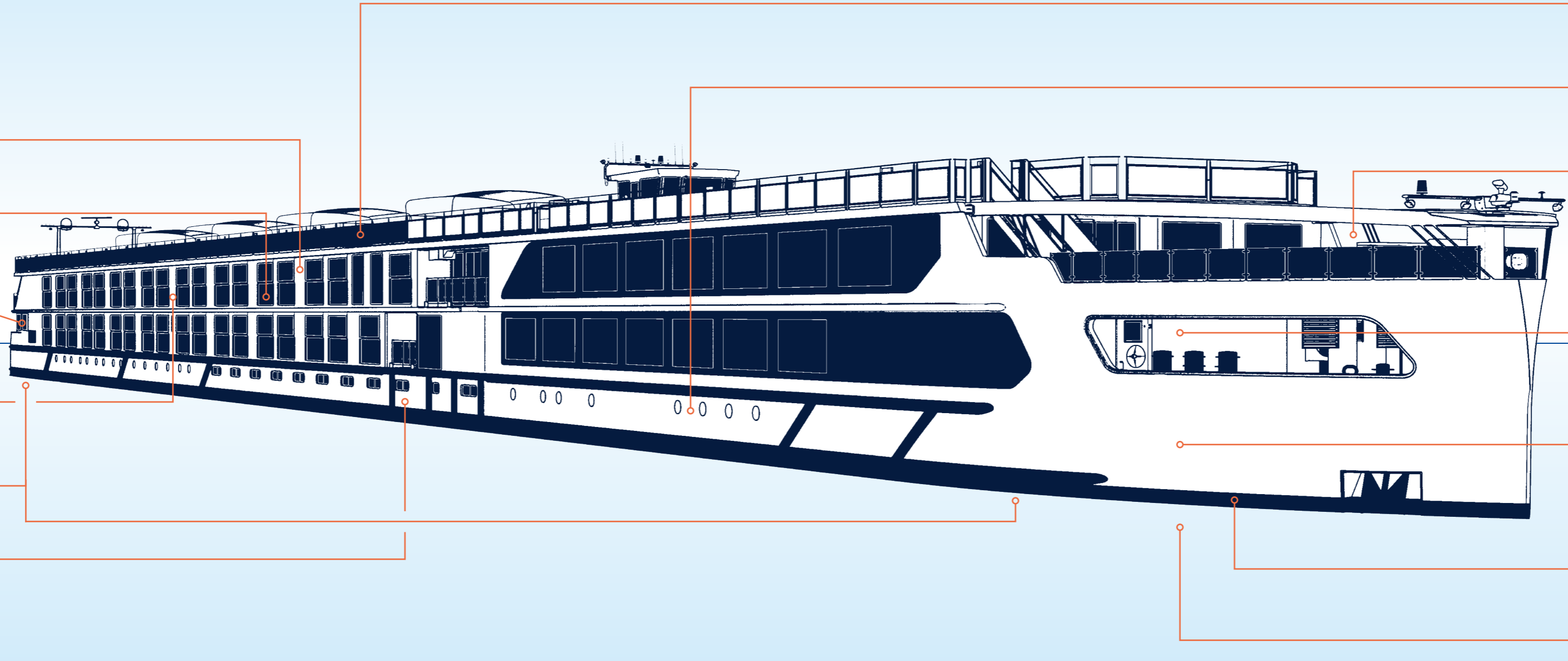


Biocide-free antifouling paint



Lower draft approx. 1.35 meters (normal sailing conditions)

Unique features Concordia Damen River Cruise 135



Full hybrid propulsion

There are many innovations that make the Concordia Damen River Cruise 135 unique. What sets her apart from almost all other cruise vessels on the European rivers is her hybrid propulsion concept.

The ship combines state-of-the-art diesel generators with electric generators and battery storage. This combination enables a process called peak shaving. **Energy that is not needed can be stored in the battery, ensuring the engines' continued smooth and efficient operation.** When entering and leaving ports the ship can sail in **full-electric mode, almost silently and without local emissions.**

Like all Concordia Damen vessels, our newbuilds have a **shore power connection** to charge the battery system without emissions.

The River Cruise 135 runs on Marine Gas Oil. MGO is an ultra low sulfur fuel oil (ULSFO), which means it can be used in Emission Control Areas (ECAs), mostly ports. To ensure that as little fuel as possible is used from the start, we designed this luxury river boat in such a way that the hull has **minimum water resistance.** Inevitable **exhaust gases are treated with so-called SCR catalysts.** Highly efficient particle filters ensure that at least 75% less nitrogen oxides (NOx) and more than 90% less particulate matter enter the atmosphere.

Intelligent use of residual heat

Another innovation in this new design is the use of residual heat. When energy is consumed, waste heat is created as a byproduct. To use this efficiently, the vessel generates electricity from residual heat. **Electrical energy is stored in the battery pack and can support the on-board electrical system.**

Waste heat can also be used to heat the water required for hotel operations.

The ship's **wastewater treatment** plant is state-of-the-art. It is a membrane system that uses a complex process to clean the wastewater of contaminants. The residue, sludge, can be removed by specialised companies.

Water consumption and waste reduction

Concordia Damen attaches great importance to continuously reduce all types of onboard waste. To **eliminate the need for plastic water bottles,** we have already installed water dispensers throughout the ship, freely accessible for guests 24 hours a day. Guest can also fill the carafe in their cabins this way.

In addition to reducing food waste, solving the problem of single-use plastic is key. As usual, you will find a selection of care products in each cabin. The ingredients of these certified natural cosmetics are biodegradable and packaging is almost completely recyclable.

The situation is similar with cleaning materials and disinfectants used by the crew to maintain the floating hotel and keep it clean for each guest.

Waste is carefully separated and disposed of.

CONCORDIA DAMEN RIVER CRUISE 135

Accelerating efficiency, maximising uptime

The vessel is able to draw on the Damen Triton connected vessel platform. This user-friendly, **award-winning IoT solution** collects data from thousands of sensors located around the vessel, paving the way for significant increases in efficiency, remote monitoring and the maintenance of onboard systems and their performance.

Triton can help operators, both onboard and onshore, to **establish the most efficient sailing route and profile,** thereby reducing fuel consumption and emissions considerably.

It can also highlight maintenance needs, often in advance of failure, ensuring steps can be taken quickly, thereby maximising uptime.

Reliably redundant: foresee the unforeseen

Concordia Damen has developed this river cruise ship to be totally dependable. It features significant redundancy to ensure that it is able to continue to operate, safely and effectively, in the event of unforeseen circumstances.

If required, the vessel can continue to sail at the same speed with just two thrusters, boosted for extra power. Similarly, the vessel can retain its operational profile with just three of its four engines running.

CONCORDIA DAMEN RIVER CRUISE 135

Financing opportunities

A river cruise vessel from Concordia Damen offers the additional benefit of potential access to the Damen Financial Services portfolio.

Damen Financial Services combines an in-depth understanding of maritime markets with **over 40 years of tailored financial solutions.** During this time, Damen Financial Services has built up a strong network consisting of national and international banks, as well as export credit agencies.

Damen Financial Services connects you to the financial arrangement that best suits your needs.

Need more than one vessel?

With access to Damen's network of shipyards worldwide, Concordia Damen is well positioned to build and deliver this river cruise vessel in large series in the shortest possible timeframe.

Note that our extensive network offers you access to the leading interior designers and suppliers in the Netherlands.

Each interior is based on a storyline, giving each ship not only a unique look & feel, but also a logical routing, a 'walk-through' that feels just right for both crew and passengers.



Concordia DAMEN

Concordia Damen has an extensive track record in the design, construction, and delivery of vessels for the inland shipping sectors. This includes for the transportation of cargo and for high-end river cruising.

The company holds a contemporary view of shipping and is constantly seeking improvement in both innovations and well-established marine technologies. Concordia Damen combines its knowledge and experience with a flexible approach. The result is a portfolio of efficient, environmentally sustainable vessels, tailored to the requirements of the client and fit for the future.

From its outfitting yard in the Netherlands, Concordia Damen proudly serves clients located all over the world. As part of Damen Shipyards Group, Concordia Damen offers access to a global network of maritime expertise and aftersales support.

Concordia Damen does not just deliver a vessel; it provides support throughout the entire lifecycle.



Concordia Damen
Biesboschhaven Noord 7
4251 NL Werkendam
The Netherlands

+31 (0)183 600 391
info@concordiadamen.com
concordiadamen.com

