

# CDS 4115 River Pusher



Specifically designed for the Paraguay River system. The 'CDS 4115 River Pusher' allows you to work longer in shallow waters. Strong, proven, shallow draft.

7.5

feet max. draft

5,400

brake horsepower

450

kN bollard pull

20

barge configuration

## CDS 4115 River Pusher

Concordia Damen has designed a 5,400 bhp, shallow draft push boat. As Latin American rivers experience longer periods of low water levels, this is a useful feat in the current climate. The CDS 4115 River Pusher is specifically suited to the circumstances on the main rivers systems in Paraguay and other complex river systems.

To design a fit-for-purpose workboat for Paraguayan clients, our engineers thoroughly researched the characteristics of the Paraguay River in relation to the desired operational profile of the vessel. Adding the results to their years of experience with building river pushers for local conditions and delivering them to Paraguayan clients, the new pusher is firmly based on proven technology.

Measuring 41.0 x 15.5 metres and powered by three diesel direct driven engines (generating abt. 1330 kW each), the CDS4115 can handle push-barge configurations up to 20 barges (290 m long x 60 m wide).



# CDS 4115 River Pusher

Type	A1 IWW Pusher/tug
Class	RINA/LLOYDS
<b>Principal dimensions</b>	
Length o.a.	41.00 m
Breadth mld.	15.50 m
Draught min.	6.0 ft / 1.83 m
Draught max.	7.5 ft / 2.29m
Deadweight	250 ton @ 6.5 ft / 380 ton @ 7.5 ft
Design speed	7 knots
Crew	14 + 1 (optional)

## Propulsion

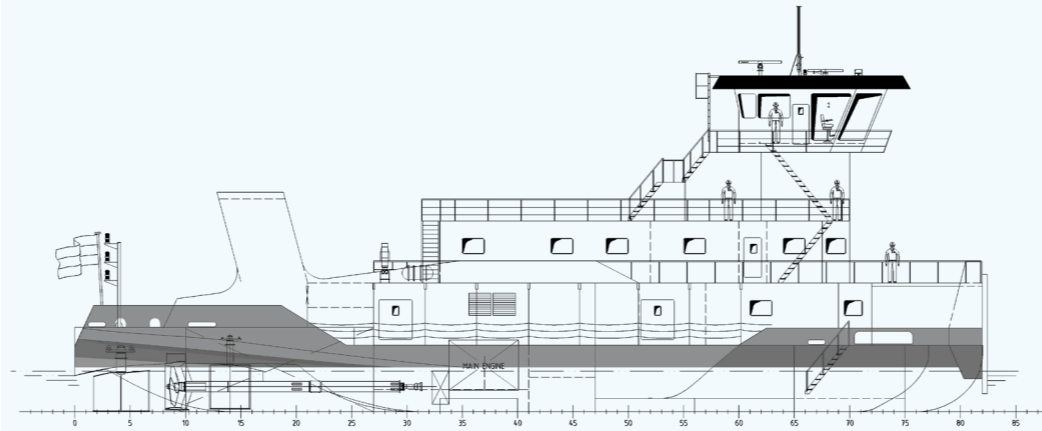
Engines brand/type	Yanmar 6EY22AW IMO II
Power main engines	3x 1330 kW @ 900 rpm
Bollard pull	approx. 450 kN
System	3x DD
Propellers	3x 1850 mm
Nozzles	3x 1870 mm HR type
Rudders	6x Easy flow (optional 3x)
Flanking rudders	4x

## Electric system

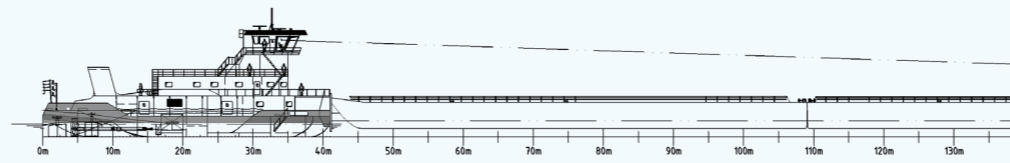
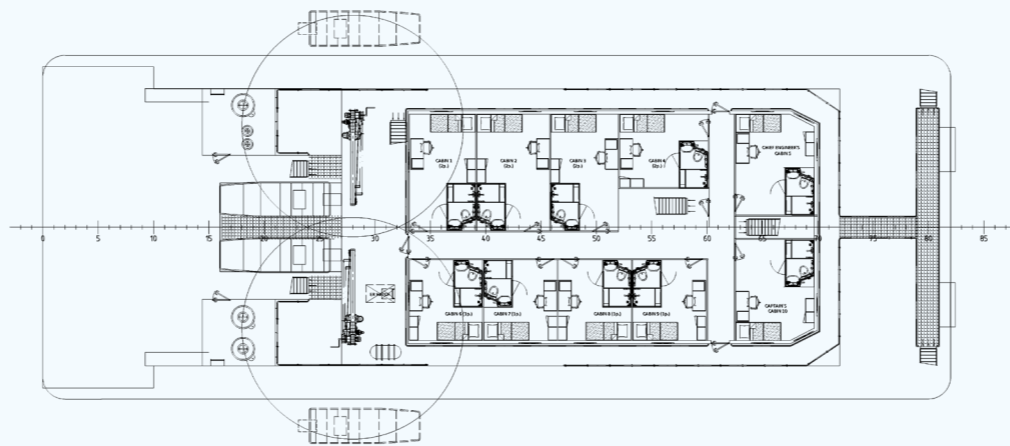
Generator(s)	2x 122 kW Cummins QSB-7DM
Emergency generator	approx. 65 kW (optional)
Power	400 V – 230 V
Navigation parts	classified river types

## Tank capacities

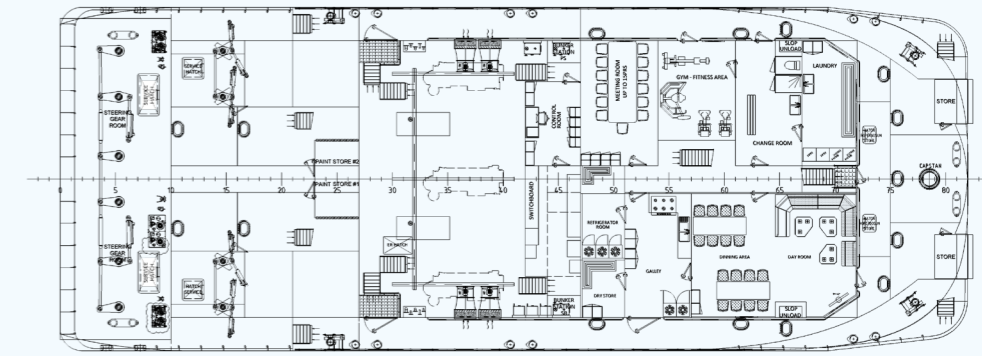
Fuel oil	421 m <sup>3</sup>
Ballast water	210 m <sup>3</sup>
Fresh water	42 m <sup>3</sup>
Sump	6 m <sup>3</sup>
Lub oil	10 m <sup>3</sup>
Dirty oil	10.9 m <sup>3</sup>
Black water	7.3 m <sup>3</sup>
Gray water	7.3 m <sup>3</sup>



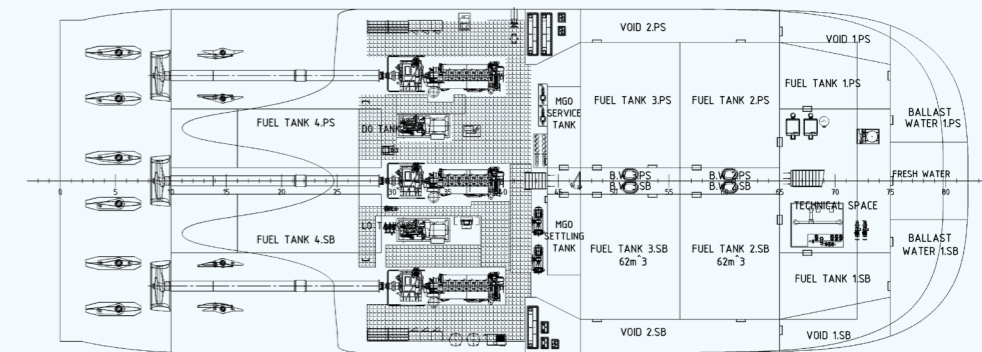
ACCOMMODATION DECK 5800 A.B.



MAIN DECK 3000 A.B.



TANK TOP 600 A.B.



WHERE VISION MEETS REALITY



concordiadamen.com



## Concordia Damen

Concordia Damen designs and builds inland waterway vessels with an innovative and cost-effective profile, both for (smaller) family-owned shipping companies and multinationals looking to optimise their port and river logistics. Additionally, we are a reputable shipbroker, supplying owners with selling or purchasing services.

Down-to-earth-management, a contemporary view on shipping and a track record of 250+ vessel deliveries enable us to successfully build and broker for clients worldwide.

High quality, innovation and efficient shipbuilding is the Concordia Damen trademark. We can effectively process new developments into our services – and your newbuild.

