

CDS Riverbuster 1909



The 'CDS Riverbuster 1909' is specifically designed to comply with the latest European emission and noise standards.

1,500

kilowatt

25

tonnes bollard pull

10

knots

4.20

meter airdraft

CDS Riverbuster 1909

Concordia Damen has developed the Riverbuster 1909 for operations in rivers and coastal areas. It is capable of undertaking a wide variety of activities including towing, barge handling, marine construction and dredging support. To achieve this, it can mount a wide range of project specific equipment including winches, deck cranes, A-frames and containers.

Operated by a crew of two, the vessel measures 19 metres by 9.08 metres, and has a draught of 1.9 metres. Engine options range from direct diesel to fully electric, delivering up to 1,500 kW of power and 25 tonnes bollard pull.

The crew are accommodated in two single cabins, with the option of two doubles. A day room / galley, dry store and sanitary facilities are all part of the standard fit-out.



CDS Riverbuster 1909

Basic functions Towing*, pushing, dredge support
 Class Bureau Veritas
 Notation Inland ✕15 IN (1.2) Z Pusher ●MC

Principal dimensions

Length o.a. 19.00 m
 Breadth mld. 9.08 m
 Draught aft 1.90 m
 Airdraft 4.20 m
 Displacement 160 ton

Tank capacities

Fuel oil 15.0 m³
 Fresh water 1.2 m³
 Sewage 1.0 m³
 Bilge water 1.0 m³

Auxiliary equipment

Generator set 2x 50 kW
 Bilge pump 15 m³/hr
 General / FiFi pump 25 m³/hr

Performances

Bollard pull ahead 25 tonnes
 Speed approx. 10 knots

Propulsion

Main engines 2x Volvo T16
 Total power 1,500 kW
 Propulsion 2x Veth VL-400si + thrusters 2x 500 kW
 Exhaust emission Stage V

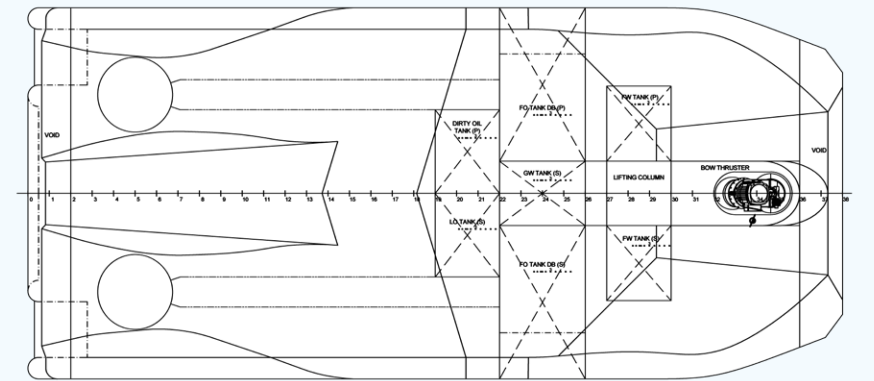
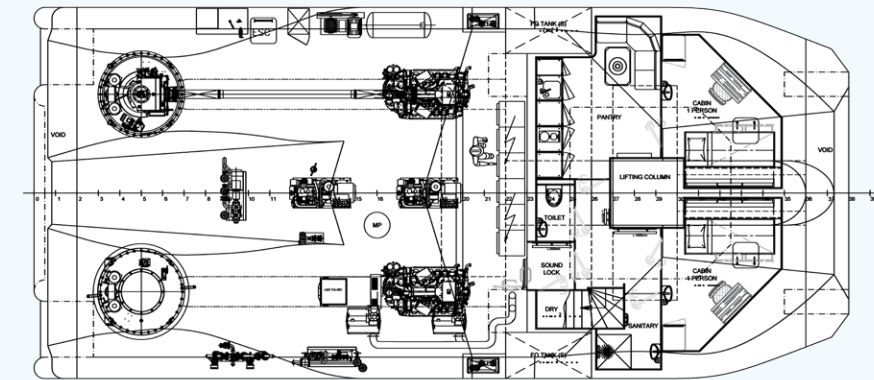
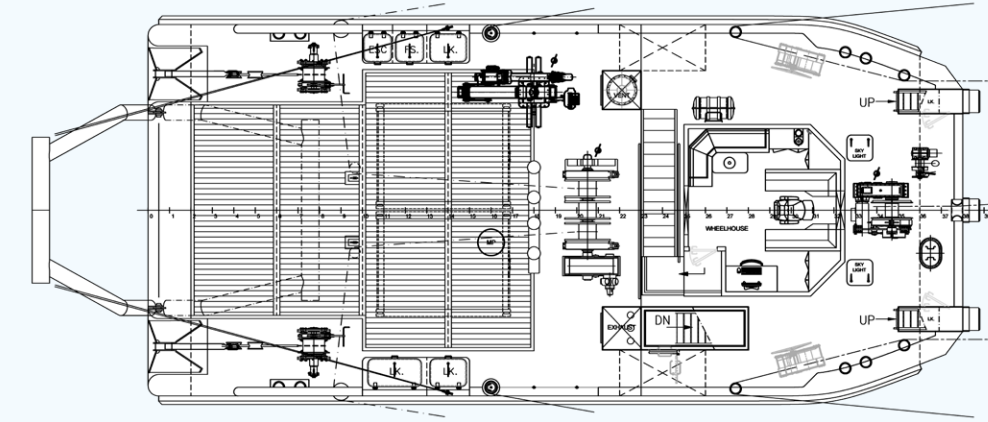
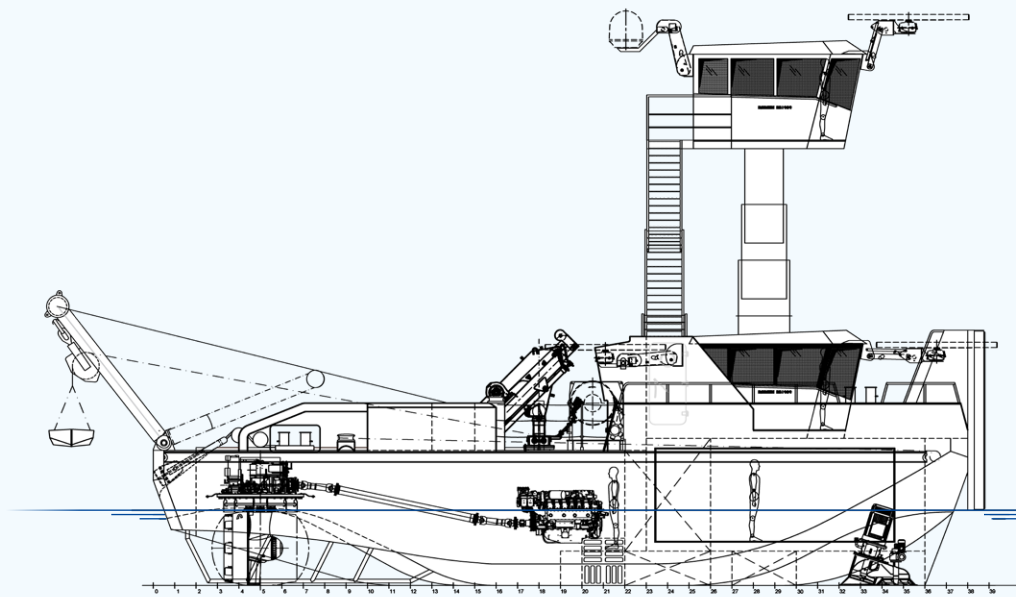
Accommodation

Heated and air-conditioned living spaces for 2 crew, consisting of two single cabins (optional 2 double cabins), galley / day room, dry store and sanitary facilities

Nautical and communication equipment

Radar s-band JRM-611-7 incl. 7ft scanner
 Inland ECDIS Alphachart
 Autopilot Alphapilot MF
 Bend indicator Alphaturn MFM
 Satellite compass/GPS* JLR21
 VHF radio telephone Sailor 6248
 Handheld VHF Standard Horizon - type HX400E
 AIS Em-Trak - type A200

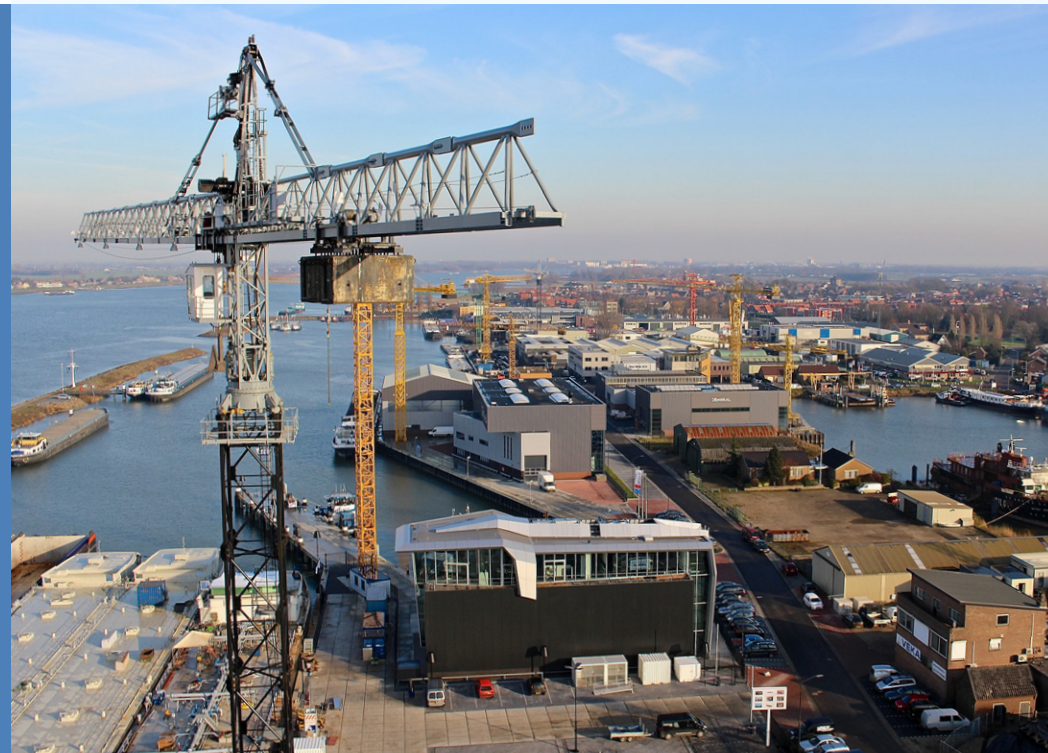
* optional



WHERE VISION MEETS REALITY



concordiadamen.com



Concordia Damen

Concordia Damen designs and builds inland waterway vessels with an innovative and cost-effective profile, both for (smaller) family-owned shipping companies and multinationals looking to optimise their port and river logistics. Additionally, we are a reputable shipbroker, supplying owners with selling or purchasing services.

Down-to-earth-management, a contemporary view on shipping and a track record of 250+ vessel deliveries enable us to successfully build and broker for clients worldwide.

High quality, innovation and efficient shipbuilding is the Concordia Damen trademark. We can effectively process new developments into our services – and your newbuild.

